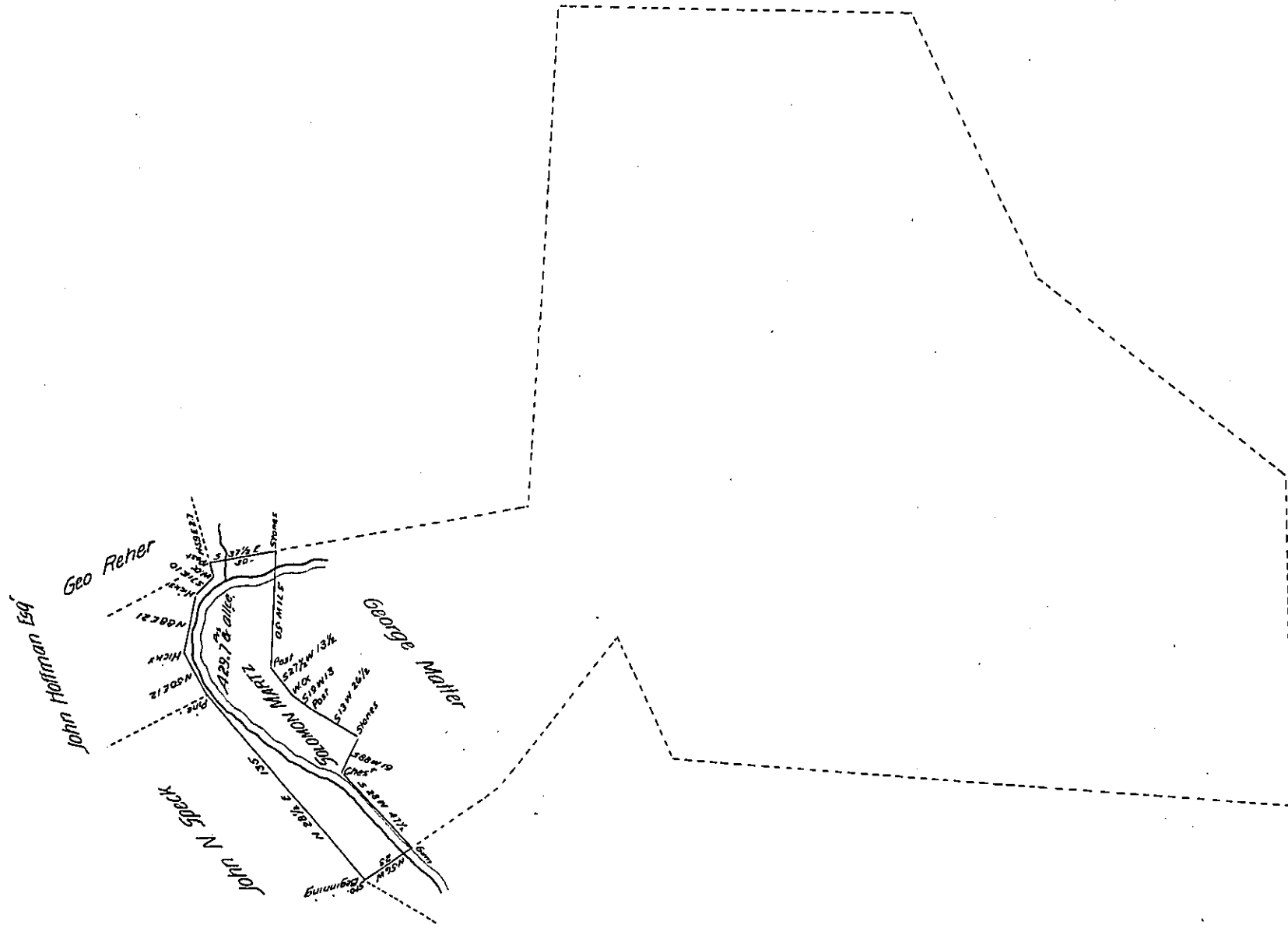


N.B. The dotted lines represent the Boundary of the original tract.



Resurveyed February 26th 1840 the above described tract of land for Solomon Martz containing twenty nine acres and seven perches and allowance of six per cent for Roads &c. Situate in Lykens township Dauphin county (late Lancaster) it being part of a larger tract of land containing six hundred and seven and a half acres and allowance, which was surveyed on the 17th 18th & 19th days of June 1791 to Andrew Riegler Christian Hoffman and Nicholas Hoffman in pursuance of a Warrant granted to Leonard Miller on the 21st day of August 1751.

per Joel B. Ferree D.S.

To Jacob Sallade Esq Surveyor General.

IN TESTIMONY that the above is a copy of the original remaining on file in the Department of Internal Affairs of Pennsylvania, made conformably to an Act of Assembly approved the 16th day of February, 1833, I have hereunto set my Hand and caused the Seal of said Department to be affixed at Harrisburg, this

sixteenth day of August 1906.

Haac B Brown
Secretary of Internal Affairs.